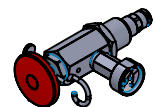
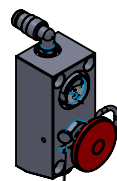


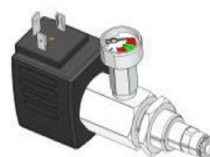
Max "L"	200 mm
min bending "R"	100 mm



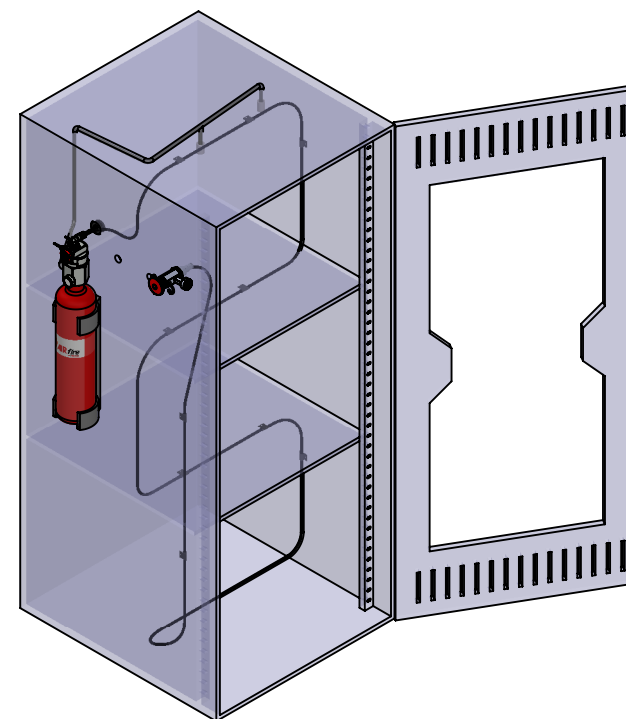
Detail A:
Simple manual
release



Detail B:
Multi release
block



Detail C:
Solenoid release



Nº	Name	Description
1	Brackets	Two brackets to fix the cylinder
2	Cylinder	Capacity 6, 9, 12 lts
3	LP Valve	HFC227 valve for nozzle discharge.
4	Grommet	To pass tube through the wall
5	Piping	Discharge pipe (Not included)
6	Nozzle	To discharge gas
7	Tube fixing	To fix tube to the wall (5 units/ meter)
8	Tube	Detection tube (Max. length: 10m)
9	Manual release	For manual activation. You can choose between 3 options that you can see it in detail A, B, C.

* Airfire recommends conventional detection system for these protected volumes

Code	Capacity	Protected volume	
		NFPA (0,55 Kg/m3)	EN (0,677 Kg/m3)
ARF22706NM	6 lts / 6 Kg	10.91 m3	8.86 m3
*ARF22709NS	9 lts / 9 Kg	16.36 m3	13.29 m3
*ARF22712NS	12 lts / 13 Kg	23.64 m3	19.20 m3

Product name:
ARMANFIRE HFC 227 NOZZLE DISCHARGE SYSTEM
 Low pressure

